



FACULTY OF MEDICINE UNIVERSITY OF NIS

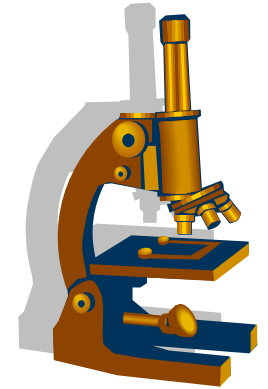
Prof. dr Milan Visnjic
Dean

Background



- **Faculty of Medicine, University of Nis**, established in 1960, is the government-owned institution of higher learning offering undergraduate, postgraduate (MSc and PhD) and specialist programs in
 1. *medicine*, (the first established study group)
 2. *stomatology*,
 3. *pharmacy* (newly introduced)
 4. *nursing* higher education programs (newly introduced).

Background (cont.)



- Worth mentioning are certainly the scientific investigations (fundamental, developmental, applied), health care, health care personnel development, international cooperation programs with the most prestigious educational and investigational institutions worldwide.
- Of all the teachers, 174 are involved in various international and domestic scientific projects (22 projects at the moment).

Background (cont.)

- Publishing activities of the Faculty and the University of Nis:
 1. **Acta Medica Medianae**, (available at www.medfak.ni.ac.rs)
 2. **Acta Facultatis Medicae Naissensis**, (www.medfak.ni.ac.rs)
 3. **Acta Stomatologica Naissi** (www.medfak.ni.ac.rs)
 4. **Facta Universitatis** (www.junis.ni.ac.rs)

Basic data

■ From 1960 to the present there were:

1. **11.285** students of medicine,
2. **3.399** students of dentistry,

with **6.252** graduations in both study groups (out of which more than 400 foreign citizens).



Basic data (cont.)



- In 1997, medical studies in **English** were initiated, with more than **40** students graduated so far, mainly from Greece.
- In cooperation with the FMEA, Delaware, USA, *International College of Medicine* was established in 2001 for foreign medical students, mainly from the USA, with basic and clinical medical teaching.

Basic data

- Their master degree acquired **540** candidates and **452** doctoral dissertations (till April 2004) were defended at the Faculty.
- More than **3.400** specializations in various fields of medicine and dentistry were acquired at the faculty.



Personnel

- Faculty personnel base is the second largest in Serbia, after the Faculty of Medicine in Belgrade, with **218 teachers**:
 - 82 full professors,
 - 55 associate professors,
 - 81 assistant professors and
 - 95 teaching assistants as well as
 - 104 administrative workers.
- There are also **32 visiting professors** from abroad, reknown educators and experts in their respective fields.



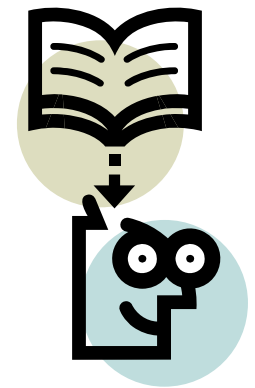
International cooperation



- Faculty of Medicine
University of Novi Sad
- CSUI from Lugano,
Swiss
- Faculty of Medicine in
Banjaluka, Bosnia
- University of Bochum,
Germany
- University of
Thessaloniki, Greece
- University of Padova,
Italy
- Guy's Hospital,
London, UK
- Medical School,
University of
Nottingham, UK
- University of Glasgow,
UK
- Nica, France

Scientific-educational base

- Scientific-educational bases of the Faculty are the **Clinical Centre Nis** clinics and institutes, hospitals in Nis, Pirot, **Sokobanja, Niska Banja, Public Health Centre, Clinic of Dentistry** etc., where the clinical teaching takes place. In these reknown health care institutions knowledge is acquired about the latest diagnostic and therapeutic approaches.



Clinical centre Nis

- Clinical Centre Niš is the second largest health care institution after the Clinical Centre in Belgrade, educational base for 15 clinical subjects.
- It covers with its services the region of approximately 36 municipalities and around 2 million people, among them 50.000 refugees from Kosovo and 15.000 refugees from Bosnia and Croatia, as well as over 100.000 socioeconomically endangered individuals



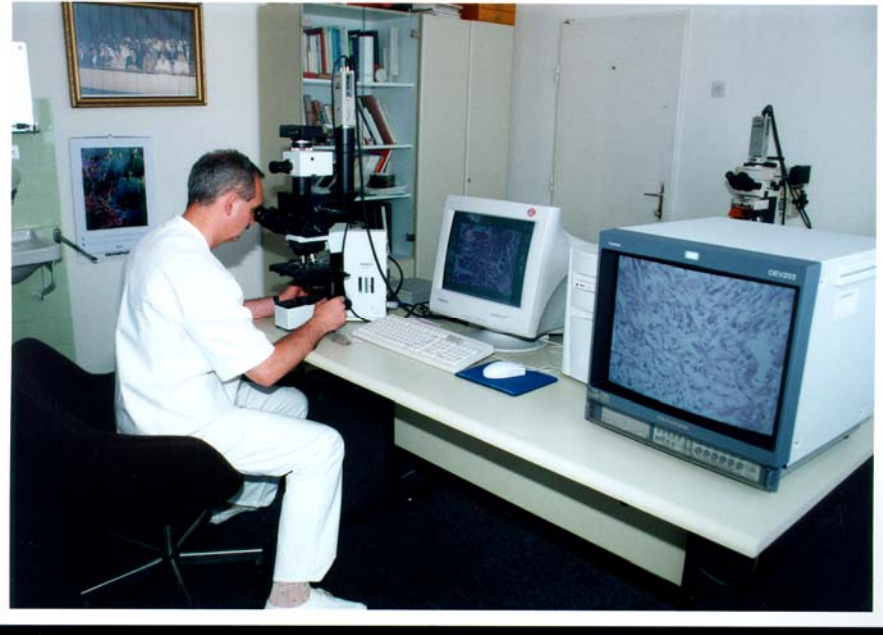
Clinical Centre Nis – basic data

- **26** organizational units (institutes, clinics and centres), 4 sectors (administration, technical maintenance)
- **1532** patient-beds and around **2800** employees
- around **47.800** patients a year
- **450.000** hospital days realised a year



Clinical Centre Nis – illustrative data

- Daily clinic (outpatient) services take up around **40.000** hospital days
- **3400** babies are delivered yearly
- **60.000** (**2500** a month) operations and minor surgical interventions are performed a year



Clinical Centre Nis – illustrative data

- **11.400.000** outpatient services: specialist exams, diagnostic and therapeutic services
- **1754** diagnostic radiologic explorations a month
- **12.220** biochemical analyses a month



Faculty facilities

- Faculty library with funds of over **22.000** books in various languages
- Subscription to **93** international periodicals
- Always available *Internet* through local LAN



Process of education

- Educational experience through basic sciences and clinical courses
- Current enrollment - over **2500** students in all 4 study groups in undergraduate, postgraduate & specialist programs



Undergraduate programs

■ Acquirement of the 1st university degree

- *Doctor of Medicine* (6 academic years)
- *Doctor of Stomatology* (5 academic years)
- *Bachelor of Pharmacy* (4 academic years)
- *Graduated Medical Nurse* (3 academic years)

Eligible candidates should have completed high school (equivalent to 12th grade, at least a “B” average in Biology, Chemistry, Physics & Maths) or any secondary school running medicine-related curriculum.

Specialist programs

- Specialized training extends over **3 to 6** years, depending on the area of the specialization pursued, in medicine & stomatology
- Specialization involves theoretical & practical 2 semesters' instruction and additional residency guided by the mentor appointed by the Faculty

